



neighbourly

Global change starts locally.



Neighbourly's DigitalBridge Campaign

> Delivering digital support and AI knowledge into the charity network

Summer 2024

About DigitalBridge

- DigitalBridge is Neighbourly's new digital skills campaign!
- Delivering digital and AI knowledge via an employee volunteering campaign, starting this summer
- Helping small charities and community organisations get to grips with Generative AI basics.
- There's a big digital divide between different sectors and we want to help bridge it
- 70% of surveyed good causes said they'd like to participate



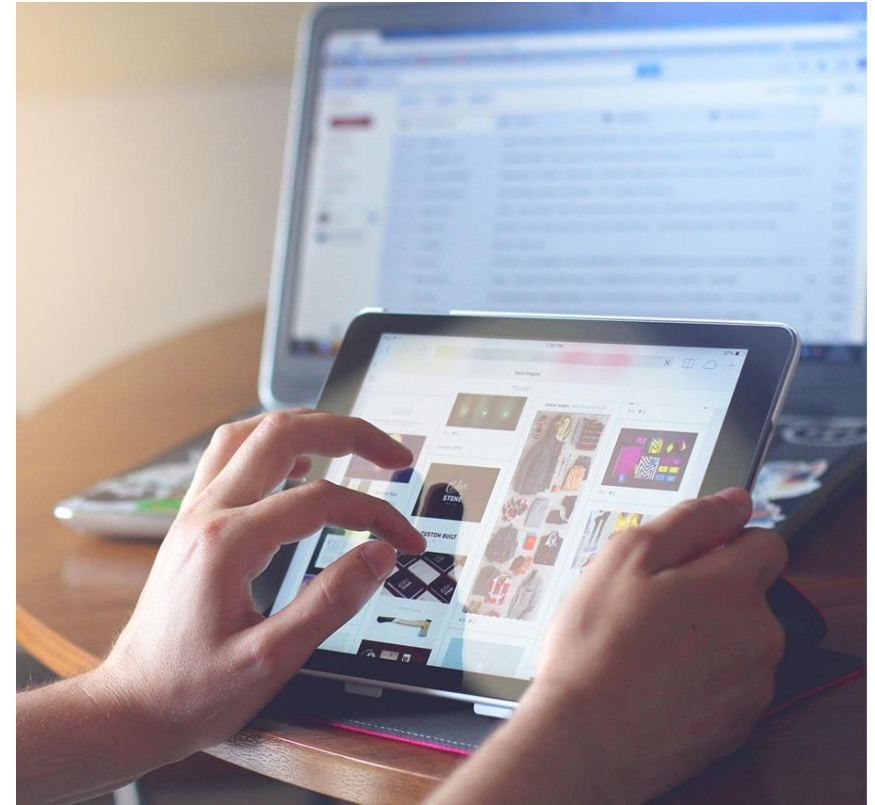
Who DigitalBridge is suitable for

- Suitable for willing volunteers that have a basic level of digital confidence
- .. and comfortable with basic tech tasks like using office software, computers, and digital tools in general
- Get to know the good causes community better, understand their needs and challenges and introduce them to some important new technologies
- Specialist or advanced knowledge in AI tools isn't necessary - resources will be provided to you to guide the sessions
- Plus, a great opportunity for you to access AI learning materials and develop confidence and soft skills



Teaming up with Microsoft

- Microsoft are leaders in building AI and digital skills
- We're delighted to be teaming up with them to provide training resources
- You'll be provided with these resources in advance of your volunteering sessions
- ...Ensuring you're confident and prepared to deliver insights to good causes



How the campaign will work for you

- Particular focus on how Generative AI can help enhance administrative, strategic and creative tasks
- Causes are already starting to post their needs on the platform
- Browse the campaign page to find opportunities & register interest
- This remote volunteering – so look at all the opportunities across the country rather than just your local area or region. Pick one that resonates.
- The good cause will set up an event at a time that suits you both
- Templated presentation deck and links to training modules will be provided

Volunteering opportunities

THE OLD SCHOOLHOUSE
ABINGTON COMMUNITY DEVELOPMENT GROUP

Help at a childrens game group on a saturday 1 time a month.

Unlimited spaces left No date set In-person

Biggar, UK

[Learn more about this cause](#) [Register interest →](#)

THE OLD SCHOOLHOUSE
ABINGTON COMMUNITY DEVELOPMENT GROUP

How to use artificial intelligence tools like ChatGPT to create content and develop strategies.

1 space left No date set Remote

[Learn more about this cause](#) [Register interest →](#)

Volunteer event format

- Sessions between you and the good cause can be run remotely with the charity lead/staff
- Start with a 'getting to know you' chat where you can understand their work and their needs better
- Sessions designed to be around 1 hour or less
- Resources will be provided to guide the sessions
- We'll also provide some guidance on accessing the Microsoft suite for nonprofits

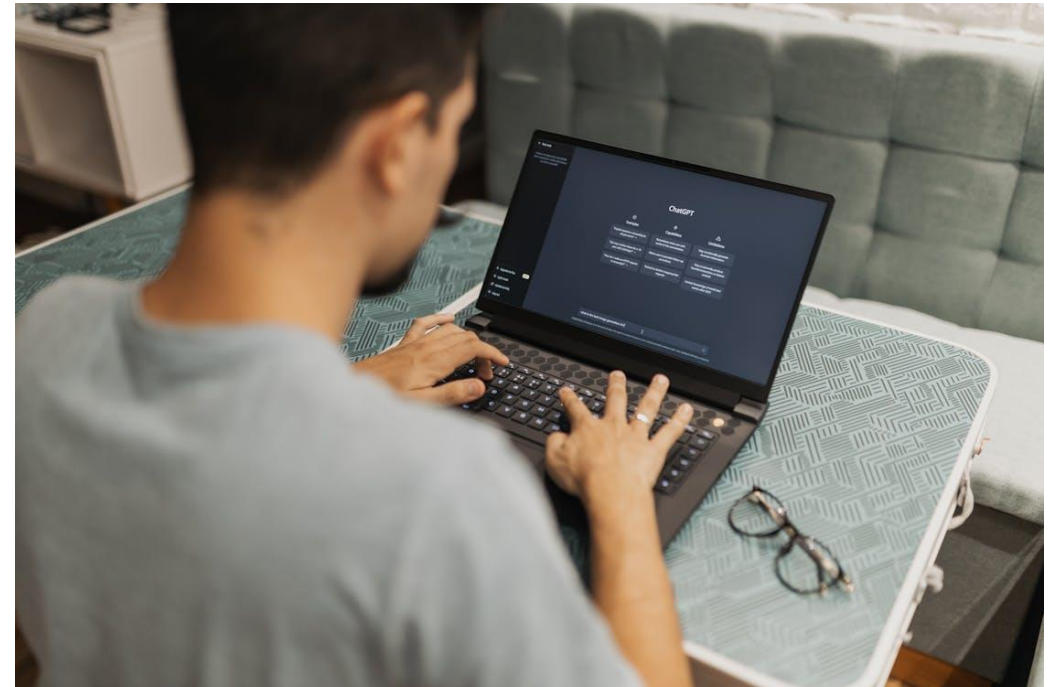


Training resources include;

- A presentation deck
- 5 modules to review in advance and signpost to the good cause
- Guidance on nonprofit free access to software

The Microsoft-supported learning resources

- Intro to Gen AI Basic Level including; what, how, opportunities, risks, staying safe etc
- Intro to Prompt Engineering starting with what it is
- Generative AI Skills for Creative Content: Opportunities, Issues, Ethics
- Copilot in PowerPoint: From Prompt to Presentation
- Excel with Copilot: AI-Driven Data Analysis



How to get involved!

- Visit the campaign page on Neighbourly and browse the opportunities
- Register your interest on the page, and sign up to events directly with your chosen good cause
- You'll receive links to access the presentation template and Microsoft resources
- There's no deadline - we'd love to get as many volunteers involved over the summer at a time that suits!



Thank you.

If you have any questions, please contact your internal volunteering lead.



neighbourly

0117 422 0866

hello@neighbourly.com

Engine Shed, Station Approach
Temple Meads, Bristol, BS1 6QH

 [@nbrly](#)

 [Facebook.com/nbrlyuk](https://www.facebook.com/nbrlyuk)

 [Linkedin.com/company/neighbourly](https://www.linkedin.com/company/neighbourly)